



**Incontro annuale 2013
Commissione Europea - Italia
Matera, 17 ottobre 2013**

Punto 2a OdG:

**•L'attuazione della programmazione
2007-2013**

- L'attuazione degli interventi
- I Grandi Progetti
- Le riprogrammazioni

Alberto Piazzi

1

- **Importanza del RAE**
- **Bilancio delle notifiche e delle analisi dei RAE 2012**

2

- **Avanzamento della programmazione**

3

- **Avanzamento dei temi strategici**

4

- **Indicatori-chiave : Descrizione e osservazioni**

5

- **Grandi progetti: Costatazioni e osservazioni**

6

- **Bilancio delle modifiche dei PO 2007-2013 (link con la crescita)**
- **Simulazione 2014-2020 a partire dal 2007-2013**

Base giuridica dell'incontro annuale:
Regolamento (CE) n° 1083/2006 del Consiglio
Articolo 68 § 1

*Ogni anno, al momento di presentare il rapporto annuale di esecuzione di cui all'articolo 67, la Commissione e l'autorità di gestione esaminano **lo stato di avanzamento del programma operativo, i principali risultati ottenuti nel corso dell'anno precedente, l'esecuzione finanziaria e altri aspetti, allo scopo di migliorare l'esecuzione.***





Importanza del RAE

Strategica

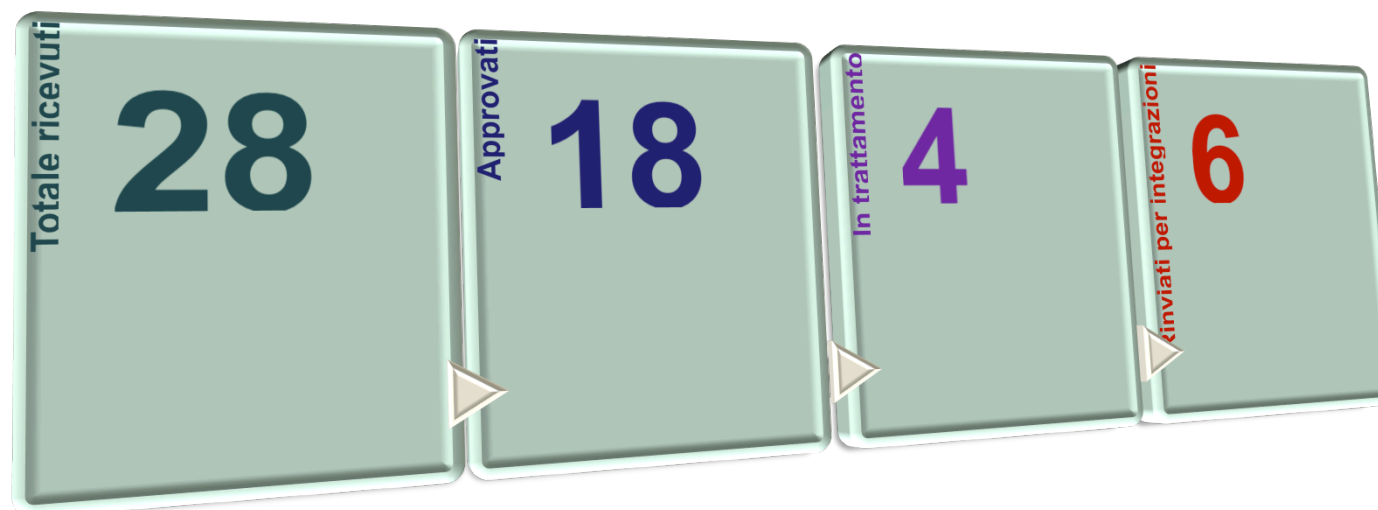
Strumento di analisi

Mezzo di comunicazione



RAE 2012

Bilancio notifiche/analisi/approvazioni*



20 RAE 2012 ricevuti nei termini (entro il 30 giugno 2013)

Al 16 ottobre 2013 risultano in trattamento **4 RAE 2012**: POR Campania, POR Sicilia, POR Piemonte, POR Bolzano. Da rinotificare a seguito osservazioni della CE **6 RAE 2012**: POIN Attrattori, POR Calabria, POR Sardegna, POR Lazio, POR Liguria, POR Trento.



RAE 2012 – Elementi perfettibili

Risultati fisici (dati SFC e commenti)

Informazioni sull'ingegneria finanziaria

Valutazione complessiva (Cap. 7)





Situazione finanziaria dell'Italia in rapporto alla media dell'UE (FESR)

Importi pagati dalla Commissione / decisi (% al 30 settembre 2013)

	Convergenza	Competitività
• Italia	• 37,2%	• 54,3%
• UE	• 57,6%	• 59,9%
• Posto	• 19_{ima}/20	• 12_{ima}/19



Stato di attuazione finanziaria Situazione al 30 settembre 2013

N+2 fine 2013:

- Convergenza : 12 PO su 12 non hanno raggiunto il target
- Competitività : 15 PO su 16 non hanno raggiunto il target

Distanza dalla soglia N+2 (deroghe escluse):

- Convergenza: 4.625 milioni € (39% degli impegni)
- Competitività: 373 milioni € (18% degli impegni)

2 mesi rimasti

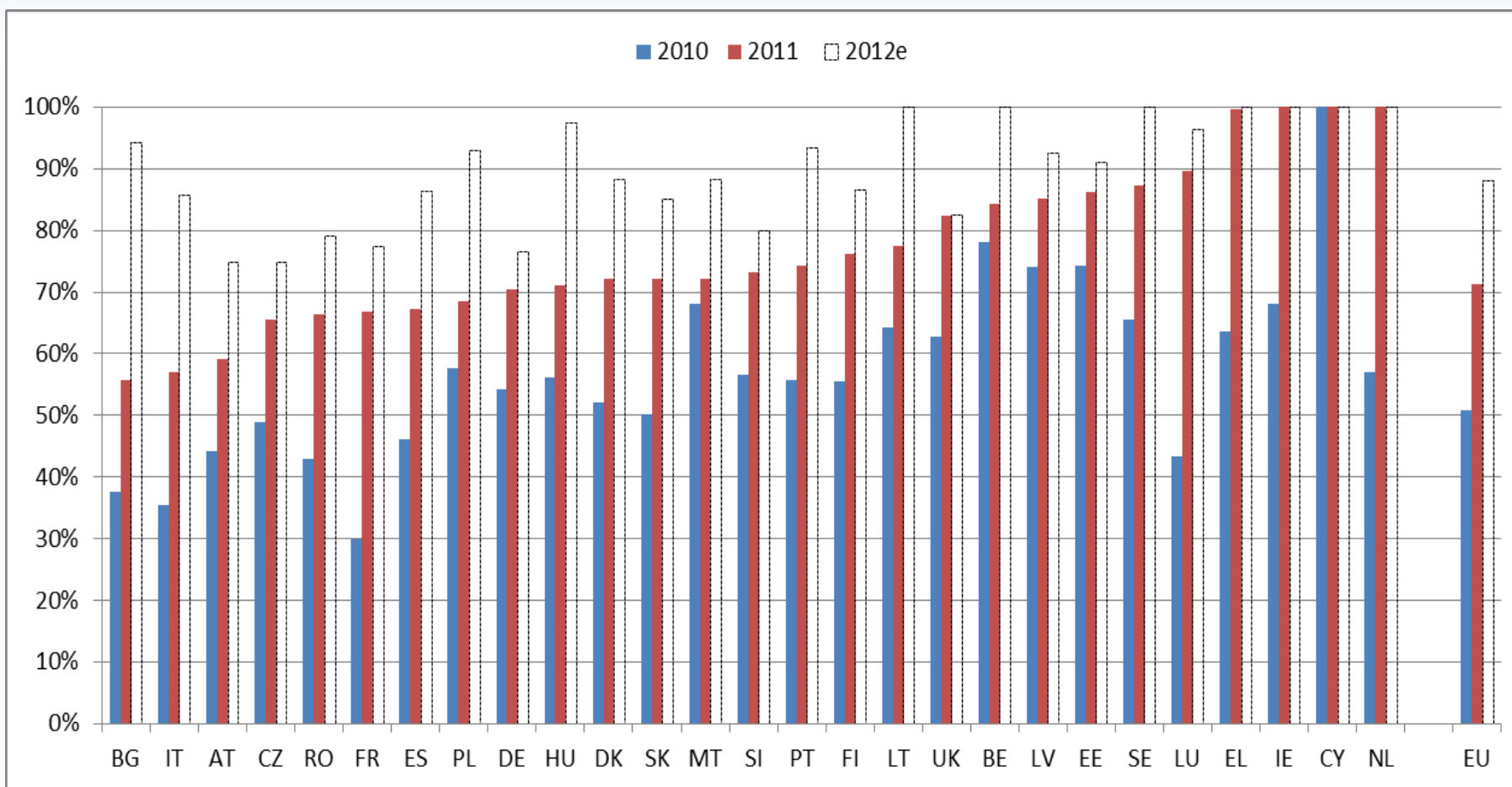


Stato di avanzamento della programmazione (progetti selezionati)

ITALIA	Importi di programmazione	Importi progetti selezionati	(B) / (A)	Media
	(A)	(B)		EU
MONIT (31.08.2013)	35,062 mld € (costo globale)	30,615 mld €	87,3%	nd
RAE - 2012	21,025 mld € (contributo FESR)	16,769 mld €	79,8%	87,0%
RAE - 2011		11,620 mld €	55,3%	72,4%
RAE - 2010		7,010 mld €	33,3%	54,3%
RAE - 2009		1,408 mld €	6,7%	26,7%



Stato di avanzamento della programmazione (progetti selezionati)





Raffronto fra monitoraggio e certificazione della spesa al 31/08/2013

MONIT (Fonte : MEF-IGRUE)			
Obiettivo	Programmazione (costo totale)	Pagamenti (costo totale)	%
Competitività	7,835,511,202	4,032,857,874	51,47%
Convergenza	27,227,402,397	9,803,891,022	36,01%
Totale	35,062,913,599	13,836,748,896	39.46%
INFOVIEW (Fonte : CE- DG Regio)			
Obiettivo	Importi Certificati alla C.E.		
	Programmazione (contributi Fesr)	Pagamenti chiesti (Fesr)	%
Competitività	3,144,405,253	1,518,804,568	48,30%
Convergenza	17,880,926,332	5,806,341,467	32,47%
Totale	21,025,331,585	7,325,146,045	34,84%



Stima delle risorse non impegnate al 31/08/2013

Fonte MONIT (MEF-IGRUE)			
Obiettivo	Programmazione	Importi impegnati	%
	(costo totale)		
Competitività	7,835,511,202	6,391,225,493	81,57%
Convergenza	27,227,402,397	24,678,059,391	90,64%
Totale	35,062,913,599	31,069,284,884	88,61%
Obiettivo		Importi da impegnare	
		programmati – impegnati	
		(costo totale)	%
Competitività		1,444,285,709	18,43%
Convergenza		2,549,343,006	9,36%
Totale		3,993,628,715	11,39%





Stato di avanzamento per temi strategici

Temi strategici comuni	Importi FESR approvati	Progetti selezionati	Italia (media)	EU (media)
Attrattività per gli investimenti e il lavoro	10,824,703,442	8,512,816,455	78,6%	88,2%
Ferrovie	2,251,754,003	2,560,038,633	113,7%	74,5%
Strade	869,358,347	780,970,375	89,8%	100,8%
Altri trasporto	1,446,308,092	1,140,222,724	78,8%	82,8%
Energia	1,864,166,807	1,049,600,076	56,3%	72,3%
Banda larga	247,051,282	70,771,476	28,6%	71,0%
Ambiente	2,358,297,508	1,731,239,082	73,4%	86,9%
Coltura e società	1,787,767,403	1,179,974,090	66,0%	95,5%
Migliorare la crescita con la conoscenza e l'innovazione	8,923,847,870	6,911,392,692	77,4%	82,7%
Innovazione e RTD	6,066,780,187	4,875,495,299	80,4%	80,0%
Imprenditorialità	1,069,940,956	619,998,049	57,9%	80,2%
TIC per cittadini e imprese	1,430,092,928	1,028,380,579	71,9%	79,6%
Altri investimenti in impresa	357,033,799	387,518,765	108,5%	96,1%
Miglioramento quantitativo e qualitativo dell'occupazione	5,897,108,531	5,137,517,613	87,1%	81,7%
Capitale umano	2,794,431,693	2,373,455,189	84,9%	82,4%
Mercato del lavoro	2,186,829,330	2,166,941,335	99,1%	80,1%
Inclusione sociale	637,246,704	423,330,001	66,4%	81,3%
Capacity Building	278,600,804	173,791,087	62,0%	88,8%
Dimensione territoriale	1,470,390,181	1,278,536,867	87,0%	94,9%
Dimensione territoriale	1,470,390,181	1,278,536,867	87,0%	94,9%
Assistenza tecnica	839,824,030	661,235,705	78,7%	72,1%
Assistenza tecnica	839,824,030	661,235,705	78,7%	72,1%
Totale	27,955,874,054	22,501,499,332	80,5%	85,3%



Attuazione Agenda Lisbona

Convergenza	Earmarking			Non earmarking		
	OP	RAE 2012	%	OP	RAE 2012	%
Italia	15,002,374,914	11,748,924,496	78,3%	6,628,609,033	5,027,306,991	75,8%
UE	187,237,525,685	153,272,697,976	81,9%	97,127,075,710	88,367,171,328	91,0%
Competitività	Earmarking			Non earmarking		
	OP	RAE 2012	%	OP	RAE 2012	%
Italia	5,135,448,713	4,656,882,994	90,7%	1,189,441,394	1,068,384,851	89,8%
UE	43,701,800,695	37,553,057,484	85,9%	11,451,213,184	10,085,251,569	88,1%





N° PO con core indicators - Ob. Convergenza

Code	Indicatore-chiave	N° PO	Code	Indicatore-chiave	N° PO
1	Jobs created	9	22	Additional population served with improved urban transport	1
2	Jobs created for men	9	23	Number of renewable energy projects	6
3	Jobs created for women	9	24	Additional capacity of renewable energy production	6
4	Number of RTD projects	6	25	Additional population served by water projects	1
5	Number of cooperation project enterprises-research institutions	5	26	Additional population served by waste water projects	5
6	Research jobs created	1	27	Number of waste projects	5
7	Number of direct investment aid projects to SME	7	28	Number of projects on improvement of air quality	0
8	Number of start-ups supported	5	29	Area rehabilitated (km2)	4
9	Jobs created (gross, full time equivalent)	2	30	Reduction greenhouse emissions (CO2 and equivalents, kt)	8
10	Investment induced (million €)	2	31	Number of risk prevention projects	5
11	Number of information society projects	6	32	Number of people benefiting from flood protection measures	2
12	Number of additional population covered by broadband access	2	33	Number of people benefiting from forest fire protection and other protection measures	0
13	Number of transport projects	5	34	Number of tourism projects	7
14	km of new roads	5	35	Number of jobs created in tourism	3
15	km of new TEN roads	1	36	Number of education projects	3
16	km of reconstructed road	4	37	Number of benefiting students	3
17	km of new railroads	5	38	Number of health projects	5
18	km of TEN railroads	1	39	Number of projects ensuring sustainability and improving the attractiveness of towns and cities	5
19	km of reconstructed railroads	4	40	Number of projects seeking to promote businesses, entrepreneurship, new technology	4
21	Value for timesaving in Euro / year stemming from new and reconstructed railroads	0	41	Number of projects offering services to promote equal opportunities and social inclusion for minorities and young people	4



N° PO con core indicators - Ob. Competitività

Code	Indicatore-chiave	N° PO	Code	Indicatore-chiave	N° PO
1	Jobs created	16	22	Additional population served with improved urban transport	3
2	Jobs created for men	15	23	Number of renewable energy projects	13
3	Jobs created for women	16	24	Additional capacity of renewable energy production	14
4	Number of RTD projects	15	25	Additional population served by water projects	0
5	Number of cooperation project enterprises-research institutions	15	26	Additional population served by waste water projects	0
6	Research jobs created	11	27	Number of waste projects	1
7	Number of direct investment aid projects to SME	13	28	Number of projects on improvement of air quality	2
8	Number of start-ups supported	12	29	Area rehabilitated (km2)	6
9	Jobs created (gross, full time equivalent)	7	30	Reduction greenhouse emissions (CO2 and equivalents, kt)	14
10	Investment induced (million €)	12	31	Number of risk prevention projects	11
11	Number of information society projects	13	32	Number of people benefiting from flood protection measures	5
12	Number of additional population covered by broadband access	9	33	Number of people benefiting from forest fire protection and other protection measures	1
13	Number of transport projects	10	34	Number of tourism projects	9
14	km of new roads	2	35	Number of jobs created in tourism	6
15	km of new TEN roads	0	36	Number of education projects	0
16	km of reconstructed road	1	37	Number of benefiting students	0
17	km of new railroads	0	38	Number of health projects	1
18	km of TEN railroads	0	39	Number of projects ensuring sustainability and improving the attractiveness of towns and cities	11
19	km of reconstructed railroads	2	40	Number of projects seeking to promote businesses, entrepreneurship, new technology	4
21	Value for timesaving in Euro / year stemming from new and reconstructed railroads	2	41	Number of projects offering services to promote equal opportunities and social inclusion for minorities and young people	2



Risultati core indicators - Ob. Convergenza

Code	Indicatore-chiave	Obiettivo finale	2012	Code	Indicatore-chiave	Obiettivo finale	2012
1	Jobs created	109,729	34,021	22	Additional population served with improved urban transport	0	0
2	Jobs created for men	67,473	31,333	23	Number of renewable energy projects	990	218
3	Jobs created for women	34,256	10,162	24	Additional capacity of renewable energy production	3,180	2,603
4	Number of RTD projects	1,884	1,567	25	Additional population served by water projects	0	0
5	Number of cooperation project enterprises-research institutions	1,207	588	26	Additional population served by waste water projects	2,010,292	466,000
6	Research jobs created	1,405	424	27	Number of waste projects	468	346
7	Number of direct investment aid projects to SME	8,972	9,528	28	Number of projects on improvement of air quality	0	0
8	Number of start-ups supported	3,589	3,177	29	Area rehabilitated (km2)	438	103
9	Jobs created (gross, full time equivalent)	7,480	5,679	30	Reduction greenhouse emissions (CO2 and equivalents, kt)	2,671	69
10	Investment induced (million €)	2,644	436	31	Number of risk prevention projects	318	171
11	Number of information society projects	1,555	268	32	Number of people benefiting from flood protection measures	65,350	56,350
12	Number of additional population covered by broadband access	0	0	33	Number of people benefiting from forest fire protection and other protection measures	0	0
13	Number of transport projects	239	105	34	Number of tourism projects	3,771	824
14	km of new roads	97	49	35	Number of jobs created in tourism	1,080	998
15	km of new TEN roads	0	0	36	Number of education projects	16,592	11,675
16	km of reconstructed road	450	22	37	Number of benefiting students	2,987,773	3,146,002
17	km of new railroads	45	13	38	Number of health projects	367	428
18	km of TEN railroads	5	728	39	Number of projects ensuring sustainability and improving the attractiveness of towns and cities	822	370
19	km of reconstructed railroads	790	815	40	Number of projects seeking to promote businesses, entrepreneurship, new technology	150	201
21	Value for timesaving in Euro / year stemming from new and reconstructed railroads	0	0	41	Number of projects offering services to promote equal opportunities and social inclusion for minorities and young people	769	280



Risultati core indicators - Ob. Competitività

Code	Indicatore-chiave	Obiettivo finale	2012	Code	Indicatore-chiave	Obiettivo finale	2012
1	Jobs created	16,981	6,696	22	Additional population served with improved urban transport	0	0
2	Jobs created for men	10,101	4,342	23	Number of renewable energy projects	2,881	1,866
3	Jobs created for women	6,280	2,354	24	Additional capacity of renewable energy production	2,035	289
4	Number of RTD projects	4,582	3,074	25	Additional population served by water projects	0	0
5	Number of cooperation project enterprises-research institutions	1,525	969	26	Additional population served by waste water projects	0	0
6	Research jobs created	2,233	1,761	27	Number of waste projects	125	27
7	Number of direct investment aid projects to SME	16,908	16,790	28	Number of projects on improvement of air quality	34	39
8	Number of start-ups supported	823	546	29	Area rehabilitated (km2)	0	0
9	Jobs created (gross, full time equivalent)	12,234	3,239	30	Reduction greenhouse emissions (CO2 and equivalents, kt)	982	194
10	Investment induced (million €)	3,634	2,216	31	Number of risk prevention projects	321	375
11	Number of information society projects	2,913	974	32	Number of people benefiting from flood protection measures	1,716,500	51,623
12	Number of additional population covered by broadband access	1,156,372	944,876	33	Number of people benefiting from forest fire protection and other protection measures	33,800	9,328
13	Number of transport projects	150	174	34	Number of tourism projects	814	619
14	km of new roads	0	0	35	Number of jobs created in tourism	302	52
15	km of new TEN roads	0	0	36	Number of education projects	22	22
16	km of reconstructed road	0	0	37	Number of benefiting students	0	0
17	km of new railroads	12	13	38	Number of health projects	56	19
18	km of TEN railroads	0	0	39	Number of projects ensuring sustainability and improving the attractiveness of towns and cities	435	374
19	km of reconstructed railroads	0	0	40	Number of projects seeking to promote businesses, entrepreneurship, new technology	32	19
21	Value for timesaving in Euro / year stemming from new and reconstructed railroads	0	0	41	Number of projects offering services to promote equal opportunities and social inclusion for minorities and young people	39	37

Indicatori-chiave : Criticità

- *Non completi per alcuni PO*
- *Valori di partenza : spesso il valore zero é assente*
- *Complessivamente valorizzato il 2012, ma non sempre per gli anni precedenti*
- *In alcuni casi i valori sono incoerenti (es. dato importante di produzione di energia rinnovabile addizionale con progetti pari a 0)*
- *Indicatori "occupazione creata" : necessario ancora un ultimo sforzo per rendere i dati statistici reali e coerenti*



Grandi progetti : constatazioni

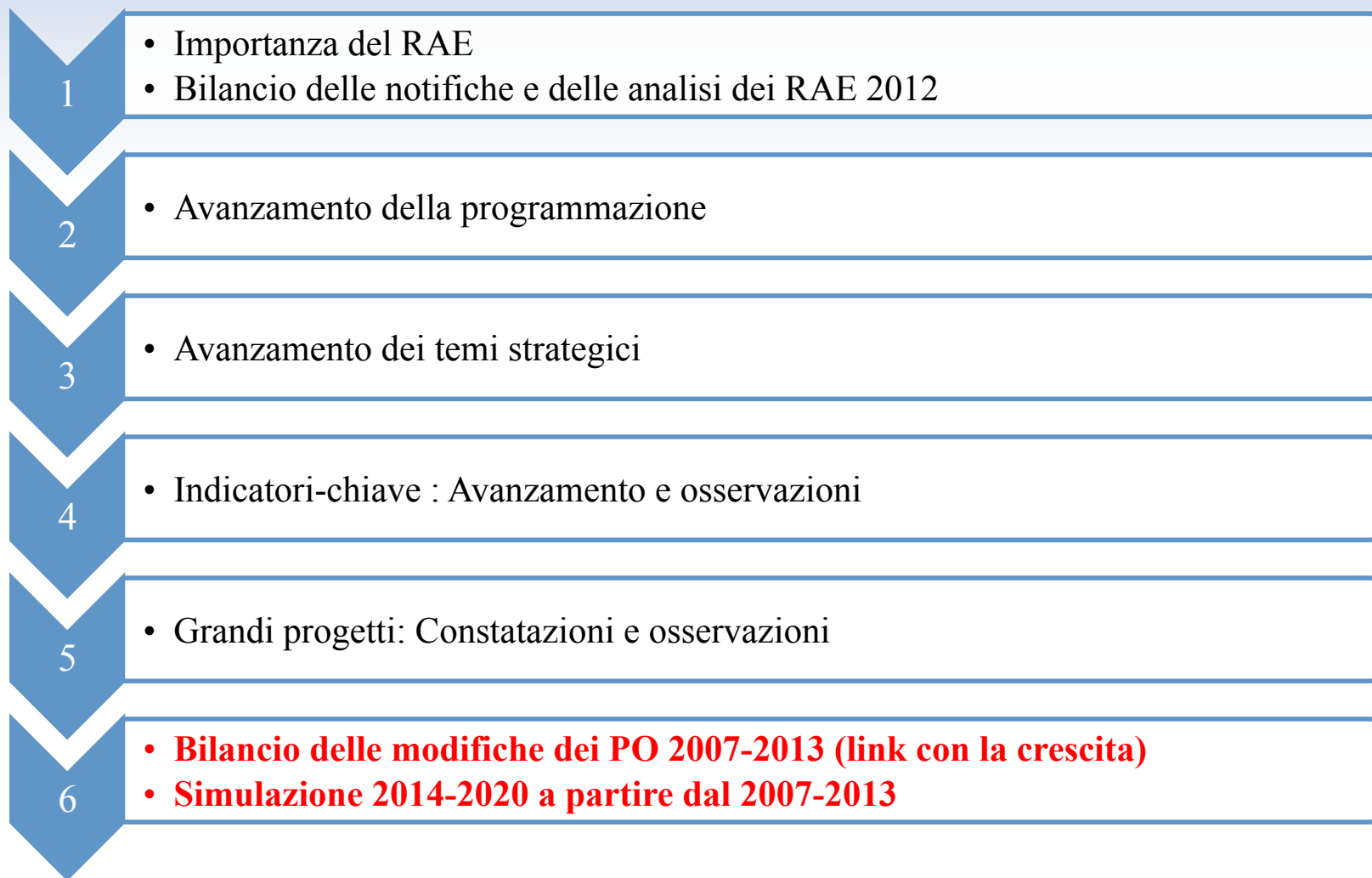
- **Indicati nei PO:** 77
- **Ritirati:** 12
- **Notificati:** 51
- **Adottati:** 35 (10 nel 2013)
 - 28 Trasporti (trasporto urbano, ferrovie, autostrade, porti)
 - 2 TIC
 - 1 Ambiente
 - 1 Investimento produttivo
 - 1 Sanità
 - 1 Cultura
 - 1 Sviluppo urbano

La programmazione é in una fase troppo avanzata per notificare e approvare altri Grandi progetti da attuare nei termini di ammissibilità/realizzazione di questo periodo di programmazione



Grandi progetti : criticità

- *Notifica e qualità tecnica dei formulari*
- *Tempi di reazione alle richieste di informazione o chiarimenti a seguito dell'esame dei formulari da parte dei Servizi della Commissione*
- *Aiuti di Stato : conseguenze della sentenza della Corte di Giustizia Europea sul caso dell'aeroporto di Leipzig – Halle*
- *Valutazione di Impatto sull'Ambiente (VIA)*
- *Appalti pubblici*



Bilancio delle modifiche in Europa

1. Riprogrammazioni tematiche:

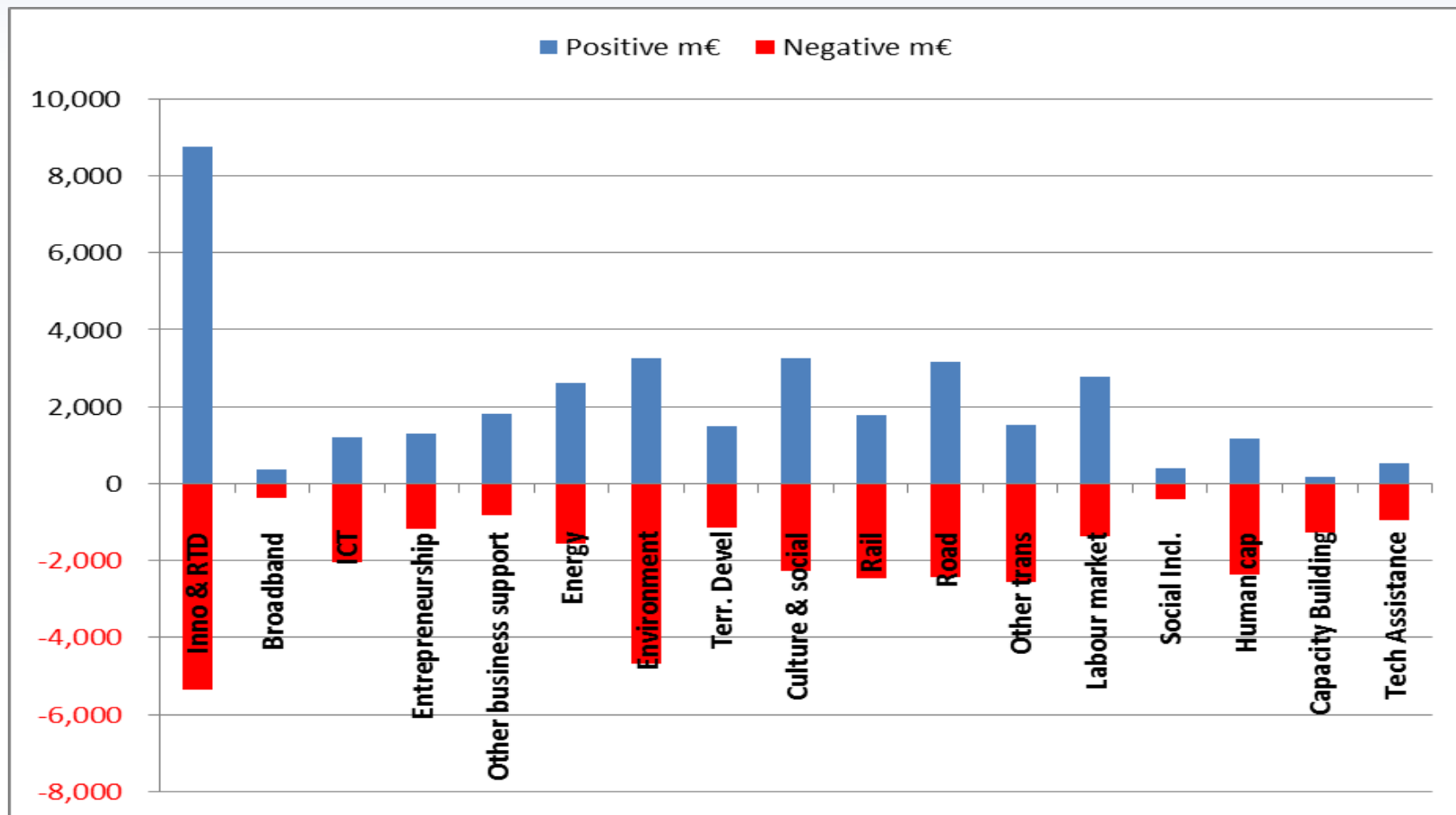
- 2012 Youth / SME Action teams (8 Stati Membri)
- National Mid term review (Francia)
- National Performance reserve (Polonia)
- Crisis responses (Grecia, Portogallo)
- Cohesion action plan (Italia)

2. Introduzione nei PO di nuove misure anti-crisi

3. Riduzione de cofinanziamento nazionale

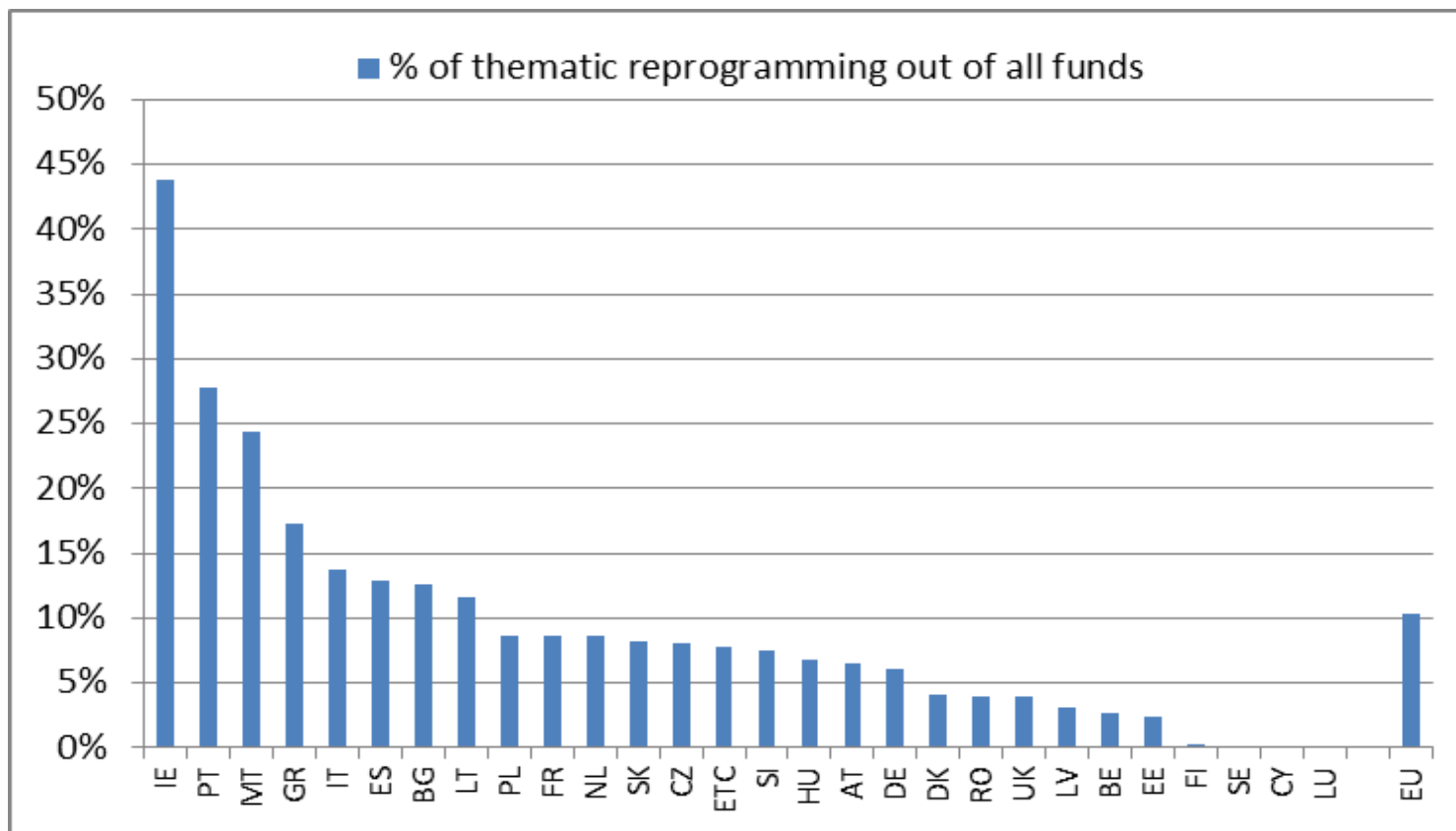


Europa – Temi strategici riprogrammati (31.12.2012)





Temi riprogrammati per Stato membro (31.12.2012)





Riduzione cofinanziamento nazionale (decisioni adottate)

Country	Total Amount			Co-financing rate %		
	Start	End	Difference	Start	End	Difference
Bulgarija	8.019.197.650	8.019.197.650	0	83,22%	83,22%	0,00%
Belgium	4.723.760.922	4.411.846.301	-311.914.621	43,68%	46,77%	3,09%
Ceska Rep.	30.939.407.863	31.218.285.344	278.877.481	85,01%	85,01%	0,00%
Danmark	1.019.154.478	1.019.154.478	0	50,00%	50,00%	0,00%
Deutschland	42.062.467.306	42.449.531.431	387.064.125	60,60%	60,04%	-0,55%
Eesti	4.073.387.299	4.108.324.414	34.937.115	83,55%	82,84%	-0,71%
Ellada	25.898.637.176	23.974.717.629	-1.923.919.547	78,04%	84,30%	6,26%
España	50.427.377.892	46.350.644.535	-4.076.733.357	68,73%	74,76%	6,03%
EU cross-coop.	11.049.860.543	11.142.468.277	92.607.734	70,70%	70,84%	0,14%
France	32.965.333.995	31.835.351.382	-1.129.982.613	40,80%	42,25%	1,45%
Hrvatska	833.123.742	833.123.742	0	84,72%	84,72%	0,00%
Ireland	2.299.017.429	1.575.242.416	-723.775.013	32,65%	47,66%	15,00%
Italia	59.413.693.771	49.546.395.938	-9.867.297.833	47,07%	56,42%	9,35%
Kypros	729.318.311	720.511.759	-8.806.552	83,97%	85,00%	1,03%
Latvija	5.753.557.415	5.658.229.654	-95.327.761	78,74%	80,07%	1,33%
Lietuva	8.278.553.553	7.971.168.030	-307.385.523	81,84%	85,00%	3,16%
Luxembourg	135.594.548	135.594.548	0	37,23%	37,23%	0,00%
Magyarország	29.318.998.366	29.318.998.367	1	85,00%	85,00%	0,00%
Malta	988.380.059	988.380.062	3	85,00%	85,00%	0,00%
Nederland	3.978.590.963	3.928.433.603	-50.157.360	41,72%	42,26%	0,53%
Österreich	2.461.114.853	2.437.283.375	-23.831.478	48,94%	49,42%	0,48%
Polska	82.037.740.463	84.070.896.205	2.033.155.742	79,50%	79,92%	0,41%
Portugal	32.722.274.296	28.686.993.093	-4.035.281.203	65,43%	74,64%	9,20%
România	23.251.397.407	22.603.377.647	-648.019.760	82,63%	85,00%	2,37%
Slovenija	4.824.763.119	4.824.763.117	-2	85,00%	85,00%	0,00%
Slovenska Rep.	13.438.326.300	13.600.339.877	162.013.577	84,54%	84,54%	0,01%
Suomi/Finland	3.523.924.164	3.523.924.164	0	45,29%	45,29%	0,00%
Sverige	3.409.291.874	3.370.047.539	-39.244.335	47,70%	48,25%	0,56%
United Kingdom	19.913.421.409	19.160.314.802	-753.106.607	49,67%	51,62%	1,95%
Totale	508.489.667.166	487.483.539.379	-21.006.127.787			



PO del QSN Italia 2007-2013 riprogrammati (decisioni adottate)

103 modifiche

66 modifiche
per il FESR

37 modifiche
per il FSE



Bilancio delle modifiche (decisioni adottate)

PO FESR	Ultima versione	Finanziamento CE			PO FESR	Ultima versione	Finanziamento CE		
		Start	End	Differenza			Start	End	Differenza
Abruzzo	3	40,47%	40,47%	00,00%	Attrattori Culturali	4	50,00%	74,20%	+24,20%
Emilia	4	36,93%	37,24%	+00,32%	Energie Rinnovabili	4	50,00%	72,83%	+22,83%
Friuli	3	24,45%	24,45%	00,00%	Governance e AT	2	50,00%	61,05%	+11,05%
Lazio	3	50,00%	50,00%	00,00%	Istruzione Pubblica	2	50,00%	50,00%	00,00%
Liguria	3	31,71%	31,71%	00,00%	Reti e mobilità	2	50,00%	53,35%	+03,35%
Lombardia	4	39,64%	39,63%	-00,01%	Ricerca e innovazione	3	50,00%	70,13%	+20,13%
Marche	4	39,09%	39,09%	00,00%	Sicurezza	4	50,00%	59,20%	+09,20%
Molise	3	36,76%	36,76%	00,00%	Calabria	4	50,00%	58,90%	+08,90%
Bolzano	2	34,73%	34,73%	00,00%	Campania	4	50,00%	75,00%	+25,00%
Trento	2	30,00%	30,00%	00,00%	Puglia	3	50,00%	58,30%	+08,30%
Piemonte	5	39,57%	39,57%	00,00%	Sicilia	5	50,00%	75,00%	+25,00%
Toscana	5	30,04%	30,06%	+00,02%	Basilicata	4	40,00%	40,00%	00,00%
Umbria	4	43,08%	43,08%	00,00%					
Val d'Aosta	2	40,00%	40,00%	00,00%	Ob. Convergenza	41			
Veneto	3	45,93%	45,93%	00,00%	Ob. Competitività	53			
Sardegna	3	40,00%	50,00%	+10,00%	Totale	94			



Bilancio delle modifiche (decisioni adottate)

Categorie	Variazione positiva	Variazione negativa	Differenza netta
Broadband	161,380	-78,360	83,010
Capacity Building	24,050	-215,080	-191,03
Culture & social	354,640	-439,630	-84,990
Energy	501,480	-512,280	-10,800
Entrepreneurship	230,330	-156,920	73,410
Environment	480,840	-503,990	-23,150
Human capital	543,650	-180,610	363,040
ICT for citizens & business	230,520	-257,470	-26,940
Innovation & RTD	985,150	-1,022,94	-37,790
Labour market	220,550	-351,570	-131,020
Other investments in enterprise	160,470	-16,250	144,220
Other transport	466,980	-573,300	-106,320
Rail	509,770	-142,800	366,970
Road	322,070	-122,700	199,360
Social Inclusion	6,700	-147,960	-141,260
Technical assistance	117,200	-121,390	-4,200
Territorial dimension	148,250	-630,210	-481,950
Totale	5,464,020	-5,473,460	-9,440

Concentrazione tematica del periodo 2014-2020 Simulazione 2007-2013 → 2014-2020

Simulazione 2014-2020 su base dati 2007-2013	ULTIME VERSIONI PO DELL'OB. CONVERGENZA				ULTIME VERSIONI PO DELL'OB. COMPETITIVITA'			
	FESR	%	% FESR cumulato	Concentrazione tematica	FESR	%	% FESR cumulato	Concentrazione tematica
1. Ricerca e innovazione	4,074,919,900	22.79	45.68	Minimo 50%	883,487,464	28.10	70.51	Minimo 80%
2. ICT	1,379,548,752	7.72			297,595,458	9.46		
3. Imprenditorialità	1,101,824,145	6.16			489,317,340	15.56		
4. Low carbon	1,611,651,252	9.01			546,910,146	17.39		
5. Adattamento climatico	557,038,556	3.12	54.32	Massimo 50%	124,542,170	3.96	29.49	Massimo 20%
6. Ambiente	2,497,275,506	13.97			344,540,685	10.96		
7. Trasporti	4,015,715,663	22.46			108,864,088	3.46		
8. Occupazione	18,900,131	0.11			6,559,367	0.21		
9. Inclusione	1,664,480,182	9.31			215,901,886	6.87		
10. Istruzione	239,756,330	1.34			19,366,849	0.62		
11. Capacità amministrativa	66,011,975	0.37			9,265,802	0.29		
Assistenza tecnica	505,895,414	2.83			97,516,424	3.10		
Altri	147,908,526	0.81	537,574	0.02				
Totale	17,880,926,332	100.00	100.00		3,144,405,253	100.00	100.00	